

Part of the  
**6000 BARRIER RANGE**

Skirts | Hi-Bars | LEDs | Sensors

## DESCRIPTION

- Aluminium extruded cabinet corners
- Removeable access doors on 3 sides
- 100% continuous duty cycle
- Single phase supply, 3 phase motor
- Two stage motor drive
- Inverter driven
- Adjustable acceleration and deceleration
- No springs or counterweights required
- Pre-wired loop detector base for single channel safety and entry/exit control
- Heavy duty roller plunger limit switches
- Programmable control panel  
c/w fault diagnostic on screen display
- Built in 8.2Ω safety edge controller
- Manual override in case of power failure
- Comes complete with M12 anchor bolts
- Heavy duty pillar block bearings

## XS ADDED BENEFITS

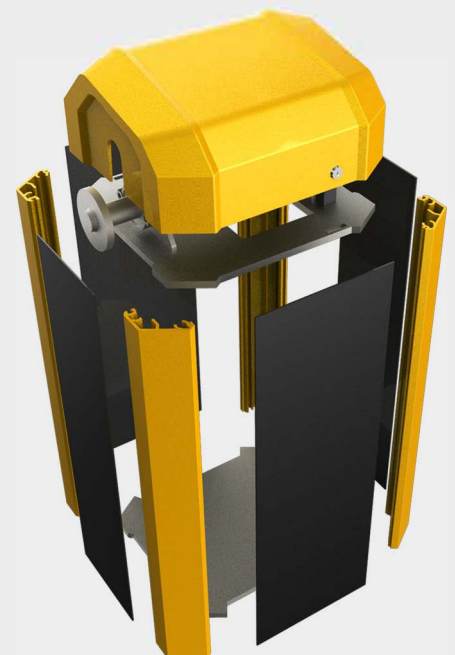
- Monitored safety sensing edges
- LED strip boom lights
- Powerful turnbuckle drive
- Colours available on request
- Low maintenance
- Ease of installation

## OPTIONAL EXTRAS

- Pogo tip support
- Magnetic lock
- Lorry Height Stop / No Entry signs
- Articulated arm (low ceilings)
- Folding bottom skirt up to 4.5
- Plain pole up to 6M

## LED BOOM LIGHTS

The 6000XS features red/green LED arm lights as standard.



## INTERCHANGEABLE SIDES



## FLEXIBLE COLOURS

Red with white, and black with yellow colours are standard with monitored safety edge. Custom cabinet colours are possible at extra cost. Includes complimentary LED lights.

## PRODUCT DESCRIPTION

<b>Maximum Boom Length</b>	6M Plain pole only 4.5M with bottom skirt
<b>Opening / Closing time</b>	2 - 7 seconds (adjustments)
<b>Power supply</b>	Single phase 230v 25Hz
<b>Drive unit</b>	3 Phase motor & wormed gearbox
<b>Finish</b>	Aluminium & polyester powder coated
<b>Accessories</b>	Pre-wired loop detector bases
<b>Springs / Counter weights</b>	NOT REQUIRED
<b>Cycles</b>	100% continuous duty cycle rating
<b>Safety edge controller</b>	Direct connection of separate 8.2K $\Omega$ safety contact edge
<b>Control panel</b>	Programmable PCB & inverter driven
<b>Boom diameter</b>	93mm x 63mm oval
<b>Dimensions</b>	1110mm x 404mm x 416mm
<b>Ambient</b>	-10 ~ 55 degree centigrade
<b>Fixings</b>	M12 anchor shield bolts included
<b>Control panel IP rating</b>	IP57
<b>Settings</b>	Programmable configuration as standard
<b>Weight</b>	Cabinet, contents and polearm: 70kg

